

WITH **GREAT POWER**
COMES **GREAT RESPONSIBILITY**

ZTC800VS5

ZOOMLION TRUCK CRANE

中联重科汽车起重机

ZTC800VS562

BN20241008



ZOOMLION

PROD
4.0



TRUCK CRANE

PROD 4.0A ZTC800VS562

U-shaped main arm
49m

fully weighted
18t

Maximum lifting capacity of fully extended arm
13t

性能卓越、智能舒适 Superior Performance, Intelligent Comfort

- 1、 5 sections 49m “ U ” -shaped main boom, full extension boom maximum load 13t, comprehensive lifting performance industry-leading;
- 2、 four-axle 46t rated chassis, front axle configuration 385 tires, rear axle configuration 325 tires;
- 3、 Standard 18t counterweight, optional 5t side counterweight, a total of 23t counterweight, lifting more stable; with 18t counterweight transfer, 5.5t side counterweight can be dismantled, low operating costs;
- 4、 YCK09380-60 engine + 10-speed synchronous box, G class chassis, strong power, economic fuel saving, excellent driving performance; 5、 the new 4.0A large space two rooms, fashionable high-end, intelligent and comfortable.



Excellent lifting performance

- 1、 Industry-innovative plate-type head and compact boom tail technology, the lap ratio of the industry's best, the boom has a strong load-bearing capacity; 2、 5 sections of 49m “ U ” -shaped jib, the comprehensive lifting capacity of the industry leader;
- 3、 Maximum lifting capacity of main boom + two sections of jib is 3t, maximum lifting height is 66.1m.



Large chassis platform for power and driving excellence

- 1、 380 HP high-torque engine + 10-speed synchronized gearbox perfectly matched, medium and low-speed hill climbing performance and comprehensive acceleration performance is superior;
- 2、 Leaf spring suspension + V-shaped thrust rod, the whole vehicle driving lateral stability is good;
- 3、 46t chassis, front axle 385 tires, rear axle 325 tires + front leaf spring suspension, rear heavy-duty rubber suspension, can take full counterweight 18t full counterweight, 50km/h speed transfer;
- 4、 Flexible shaft gearshift, better operating comfort;
- 5、 Class G vehicle with 50% climbing degree, more excellent traveling.



Safe and smooth lifting

- 1、 New generation electro-hydraulic proportional control system, high efficiency, reliable and stable control. The lowest stabilized speed of slewing is 0.1°/s and the lowest stabilized speed is 2.5m/min, which meets the demand of precise lifting operation;
- 2、 Fall amplitude compensation function, fall amplitude control is more accurate and smooth;
- 3、 Double-level H-type outriggers, the industry's largest span of 8.0m, better load stability;
- 4、 Independent radiator system of the whole machine, the temperature of the hydraulic system does not exceed 75°C, with strong environmental adaptability.



intelligent control






- 1、 Automatic identification of collecting and displaying vehicles, realizing the reminder of disassembling and assembling working condition and safety control, reducing the intensity of operation;
- 2、 Remaining amplitude indicates the range of safety amplitude of the current lifting weight, which makes the operation safer;
- 3、 Variable amplitude plane virtual wall, according to the limit height intelligent reminder “ height wall ” , low space operation more worrying.
- 4、 body controller, force limiter, intelligent power modules, sensors, real-time monitoring of the crane status, intelligent diagnostic system failure visualization, rapid location of fault points;
- 5、 working condition recommendation function, according to the input of key lifting parameters to quickly get the right working conditions, reduce the risk of lifting.
- 6、 intelligent idling + IECO energy saving module (optional), according to operational requirements, precise control of output, low fuel consumption, more environmentally friendly and energy saving.

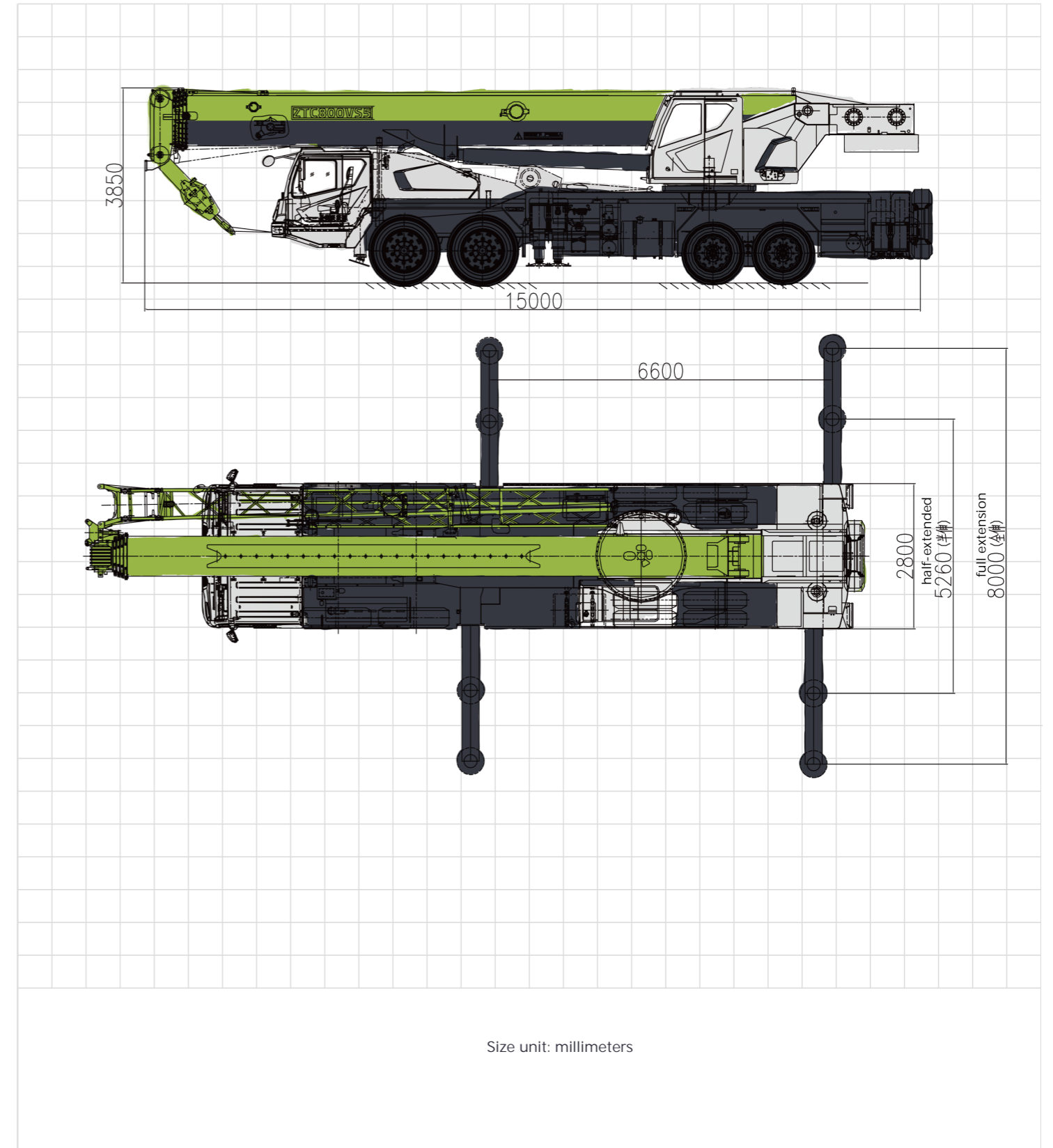


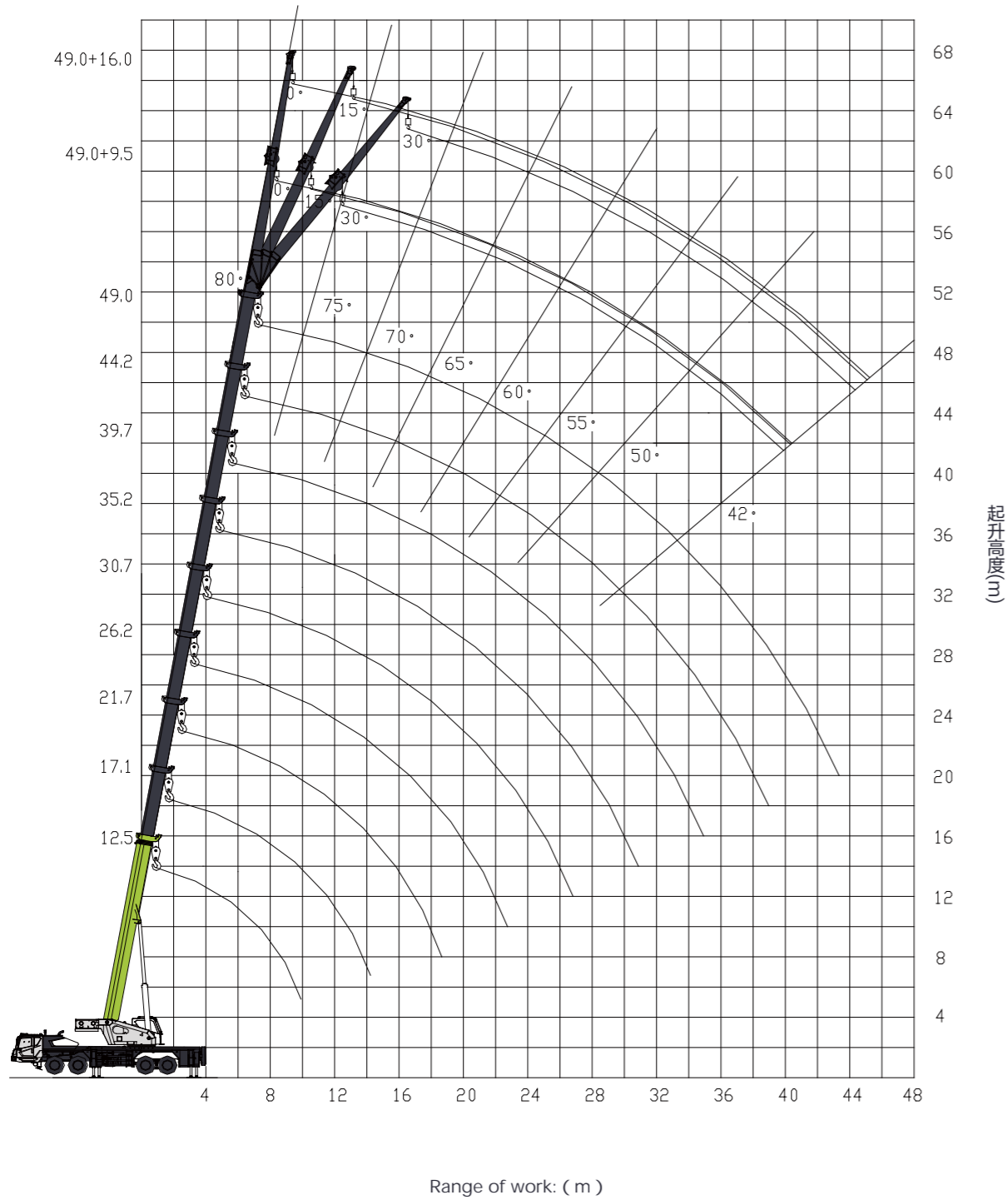
High-end comfort

- 1、 green environmental protection fashion texture of the new coating, force and beauty of the combination of strong visual enjoyment;
- 2、 4.0A new two-chamber design style, large space internal arrangement, humanized detail design, comfortable and intimate driving experience, convenient and safe operation experience;
- 3、 full-coverage aluminum alloy walking board, strong sense of quality, corrosion resistance;
- 4、 The maneuvering room is equipped with 10.1-inch touch screen computer as standard, integrated winch monitoring function, and the function is upgraded again;
- 5、 The cab is equipped with 9-inch center control screen car system as standard, integrating reversing and entertainment functions, and the functions are upgraded again.



	Project	Value	Remarks	
 Performance Parameters	Maximum rated gross lifting capacity	Kg	80000	
	Maximum lifting moment of basic arm	kN · m	2587	
	Maximum lifting moment of the longest boom	kN · m	1764	
	Maximum lifting height of basic arm	m	13.9	
	Maximum lifting height of the longest boom	m	49.8	Not considering boom deformation
	Maximum lifting height of jib	m	66.1	
	Maximum speed of single rope (main winch)	m/min	140	Reel 4
	Maximum speed of single rope (sub-winch)	m/min	135	Reel 2
	Crane arm lifting time	s	45	
	Jib extension time	s	125	
	Slewing speed	r/min	0~2	
	 Driving parameters	Maximum speed	km/h	89
Maximum Climbing Degree		%	50	
Minimum Turning Diameter		m	24	
Minimum Ground Clearance		mm	330	
Exhaust Pollutant Emission Values and Smoke Limits		Compliance with standards	Conforms to GB3847-2018, GB3847-2018 (National VI)	
100km fuel consumption		L	45	
Approach/Departure Angle		°	20/12	
braking distance		m	≤10	
 Quality parameters		Self-weight in traveling condition (gross mass)	kg	44600
		Total Vehicle Weight	kg	44470
	front axle axle load	kg	19000	
	Rear axle axle load	kg	25600	
 Dimensional parameters	Dimensions (LxWxH)	mm	15000 × 2800 × 3850	
	Longitudinal distance of legs	m	6.6	
	Outrigger lateral distance	m	Full extension 8.0, half extension 5.26	
	boom length	m	12.5~49.0	
	Main arm elevation angle	°	-1~80	
	sidearm	m	9.5、16	
	Jib mounting angle	°	0、15、30	
	Turning radius of rotary table tail	mm	4500	
 Chassis engine	model number	YCK09380-60		
	rating	kW/r/min	280/1900	
	Maximum output torque	N.m/r/min	1800 (1000~1400)	
	manufacturer	Guangxi Yuchai Machinery Co.		





working range (m)	Main Arm (m)								
	12.5	17.1	21.7	26.2	30.7	35.2	39.7	44.2	49.0
3.0	80*	70							
3.5	63	67	44						
4.0	60	64	44						
4.5	55	54	44	32					
5.0	52	51	44	32					
6.0	44	43	42	32	31				
7.0	36.5	36	36	32	31	28			
8.0	32	31	31	30	28.3	20.5	22		
9.0	27.5	27	26.5	27	25.7	24	20.5	19	
10.0		23.6	23.2	24	23.5	22.2	19.5	17.6	13
11.0		21	20.4	21.2	21	20.3	18	16.3	12.9
12.0		18.5	18.2	19	19.5	18.6	16.6	15.1	12.8
14.0			13.6	14.6	15.3	16	14.5	13.1	12
16.0			10.3	11.4	12	12.5	12.7	11.5	10.8
18.0			8.1	9	9.6	10.2	10.5	10.2	10
20.0				7.2	7.5	8.3	8.6	8.9	8.8
22.0				5.7	6.2	6.9	7.2	7.5	7.7
24.0					5.2	5.7	6	6.3	6.5
26.0					4	4.7	5	5.3	5.5
28.0						3.9	4.2	4.5	4.7
30.0						3.2	3.5	3.8	4
32.0							2.9	3.2	3.4
34.0							2.4	2.7	2.9
36.0								2.2	2.5
38.0								1.7	2.1
40.0									1.7
42.0									1.3
44.0									
I(m)	0	4.6	9.2	9.2	9.2	9.2	9.2	9.2	9.2
II(m)	0	0	0	4.5	9.0	13.5	18.0	22.5	27.3
magnification	12	12	8	6	6	6	4	4	3
hanger	55t								

The conditions marked with “*” are nominal loads.



working range (m)	Main arms (m)								
	12.5	17.1	21.7	26.2	30.7	35.2	39.7	44.2	49.0
3.0	80*	70							
3.5	65	67	44						
4.0	62	64	44						
4.5	56	54	44	32					
5.0	52	51	44	32					
6.0	44	43	43	32	31				
7.0	37	37.5	37	32	31	28			
8.0	32	33	32	30	28.3	26.5	22		
9.0	27.5	28.7	28.5	27	25.7	24	20.5	19	
10.0		25.2	25	24	23.5	22.2	19.5	17.6	13
11.0		22	21.8	21.5	21	20.3	18	16.3	12.9
12.0		19	19	19.2	19.5	18.6	16.6	15.1	12.8
14.0			15	15	15.3	16	14.5	13.1	12
16.0			11.8	11.9	12	12.5	12.7	11.5	10.8
18.0			8.3	10.2	10.3	10.5	10.3	10.2	10
20.0				8.4	8.8	9	8.9	8.9	8.8
22.0				6.5	7.4	7.6	7.7	7.7	7.7
24.0					6.2	6.4	6.5	6.5	6.5
26.0					5	5.5	5.7	5.8	5.7
28.0						4.8	5	5.1	5
30.0						4	4.3	4.6	4.5
32.0							3.6	3.9	4
34.0							3.1	3.4	3.6
36.0								2.9	3.1
38.0								2.4	2.7
40.0									2.3
42.0									1.9
44.0									
I(m)	0	4.6	9.2	9.2	9.2	9.2	9.2	9.2	9.2
II(m)	0	0	0	4.5	9.0	13.5	18.0	22.5	27.3
magnification	12	12	8	6	6	6	4	4	3
hanger									55t

The conditions marked with “ * ” are nominal loads.



Main arm elevation angle (°)	Main arm (m) + jib (m)					
	49.0+9.5			49.0+16.0		
	0°	15°	30°	0°	15°	30°
80	5.0	3.3	2.5	3.0	2.0	1.5
78	5.0	3.3	2.5	3.0	2.0	1.45
76	4.8	3.2	2.5	2.9	1.9	1.4
74	4.5	3.1	2.5	2.7	1.8	1.35
72	4.2	3.0	2.5	2.5	1.7	1.3
70	3.9	2.9	2.4	2.3	1.65	1.25
68	3.6	2.8	2.3	2.1	1.6	1.25
66	3.4	2.7	2.2	2.0	1.55	1.2
64	3.2	2.6	2.1	1.9	1.5	1.2
62	3.0	2.5	2.05	1.8	1.45	1.15
60	2.9	2.4	2.0	1.7	1.4	1.15
58	2.8	2.3	2.0	1.6	1.35	1.1
56	2.6	2.2	1.9	1.55	1.3	1.1
54	2.4	2.1	1.9	1.5	1.25	1.05
52	2.1	2.0	1.8	1.45	1.2	1.05
50	1.9	1.8	1.7	1.35	1.15	1.0
48	1.6	1.6	1.5	1.2	1.1	0.95
46	1.4	1.3	1.2	1.1	1.0	0.95
44	1.2	1.2	1.1	1.0	0.9	0.85
42	1.1	1.0	0.95	0.9	0.8	0.75
40						
magnification				1		
hanger				5t		



Main arm elevation angle (°)	Main arm (m) + jib (m)					
	49.0+9.5			49.0+16.0		
	0°	15°	30°	0°	15°	30°
80	5.0	3.3	2.5	3.0	2.0	1.5
78	5.0	3.3	2.5	3.0	2.0	1.45
76	4.8	3.2	2.5	2.9	1.9	1.4
74	4.5	3.1	2.5	2.7	1.8	1.35
72	4.2	3.0	2.5	2.5	1.7	1.3
70	3.9	2.9	2.4	2.3	1.65	1.25
68	3.6	2.8	2.3	2.1	1.6	1.25
66	3.4	2.7	2.2	2.0	1.55	1.2
64	3.2	2.6	2.1	1.9	1.5	1.2
62	3.0	2.5	2.05	1.8	1.45	1.15
60	3.0	2.4	2.0	1.7	1.4	1.15
58	3.0	2.4	2.0	1.6	1.35	1.1
56	3.0	2.4	2.0	1.55	1.3	1.1
54	2.8	2.4	2.0	1.5	1.25	1.05
52	2.6	2.4	2.0	1.45	1.2	1.05
50	2.4	2.3	2.0	1.4	1.15	1.0
48	2.2	2.1	1.9	1.2	1.1	0.95
46	2.0	1.9	1.8	1.2	1.1	0.9
44	1.9	1.8	1.75	1.2	1.05	0.9
42	1.7	1.6	1.55	1.2	1.0	0.9
40						
magnification			1			
hanger			5t			

ALL TERRAIN CRANE Service System

统一服务热线 统一服务平台 统一服务标准 **400-800-0157**

157 Service Commitment Full Guarantee

1 comprehensively **5** speedy **7** free

7×24 hour service
Covering the entire
product life cycle

Fast response: 15 minutes response
Rapid arrival: 2 hours to arrive (city
outlets)
Fast supply: 24 hours to meet the
common parts
Quick support: technical program 24
hours to provide
Fast solution: 24 hours for general
faults

Free guidance on product installation and
commissioning
Free product technical training
Free to provide door-to-door routine
inspection service
Free product exclusive service
Free product program upgrade
Free product GPS terminal positioning,
operation management
Free to provide heavy / difficult
construction solutions

